



Administration and Security Guide

Build 10.6.0.0202505200756_SNAPSHOT

Table of Contents

1. Preface	1
1.1. Updates/Security Information	1
2. RCE Administration	2
2.1. Installation as a Service on a Windows Server	2
2.1.1. RCE as a Windows Service	2
2.1.2. Service Configuration	3
2.2. Setting up Cross-Organization Networks using RCE Uplink	3
2.2.1. Security considerations of external tool publishing	4
2.2.2. Example of a Cross-Organization Network	5
2.3. Notes and Recommendations: RCE's Default Network ("LocalNet") Connections	6
2.4. Notes and Recommendations: SSH/Uplink Account management	6
3. Security Properties of RCE Features	7
3.1. Security Properties of RCE's Default ("LocalNet") Network Connections	7
3.2. Security Properties of RCE's SSH Server Port	7
3.3. Security Properties of RCE's Uplink Feature	8
3.4. Security Properties of RCE's Tool Integration	9
3.5. Security Properties of RCE's Tool Authorization System	9

List of Figures

2.1. Example RCE network	5
--------------------------------	---

1. Preface

This document is the main Administration and Security Guide for RCE. It is meant to provide practical information for IT administrators, and also provide background information regarding the security aspects of RCE setups for inspection and consideration. It is currently limited in scope and will be expanded over time.

1.1. Updates/Security Information

As third-party software (e.g. libraries) included in RCE is constantly updated, it is generally recommended to always upgrading RCE to the latest available release. However, not every update might be strictly necessary. To allow RCE users and administrators to make informed decisions, the page "Update/Security Information for RCE Releases" [<https://rcenvironment.de/pages/updatesecurity.html>] provides an overview of the status of all public RCE releases. In particular, this includes information about how important it is to update from a certain RCE version.

2. RCE Administration

2.1. Installation as a Service on a Windows Server

For ad-hoc or temporary RCE network setups, running a headless RCE from the command line is perfectly fine. For more permanent installations, however, we recommend installing RCE as a Windows service instead. This has the advantage that RCE automatically shuts down when the server is shut down, and automatically restarts when the server does.

2.1.1. RCE as a Windows Service

Executing the following steps will install RCE as an auto-start service on Windows.

1. Navigate to the `extras\windows_service` folder inside your installation folder of RCE named `rce`
2. Open the file `install_as_service.bat` and adjust these settings:
 - Set `RCE_ROOT_PATH` to the location of your RCE installation (typically, the location which you are editing these files in). RCE must already be present (and unpacked) in this location; the service installer does not copy any files there.
 - Set `RCE_SERVICE_USER` to the name of the existing user account that the RCE service should run as.

Note

This user account will be used to run RCE and all local tools that are invoked by it. Make sure that this user has appropriate system permissions to run these tools' executables, and read/write all related files.

3. Execute with administrator rights

```
install_as_service.bat
```

by double-clicking or on the command line

4. Open the Windows Service Management Console (e.g. execute "services.msc" on the command line)
5. Look for entry "RCE Service", do a right-click and click "Properties"
6. Click on the "Log On" tab and fill in the corresponding password for the user account set to the `RCE_SERVICE_USER` variable. By clicking the "Apply" button a message should inform you that the privilege to "Log on as service" was added to the account.

Note

To add the "Log on as a service" right to an account on your local computer manually:

- a. Open Local Security Policy.
 - b. In the console tree, double-click **Local Policies**, and then click **User Rights Assignments**.
 - c. In the details pane, double-click **Log on as a service**.
-

- d. Click **Add User or Group** and add the appropriate account to the list of accounts that possess the **Log on as a service** right.
-

7. Close the properties dialog by clicking "Ok"

To manually start the RCE service:

1. Open the Windows Service Management Console (e.g. execute `services.msc` on the command line)
2. Right-click on the entry "RCE Service" and select "Start"

To stop the RCE service:

1. Open the Windows Service Management Console (e.g. execute `services.msc` on the command line)
2. Right-click on the entry "RCE Service" and select "Stop"

To uninstall the RCE service:

1. Navigate to the `extras\windows_service` folder inside your installation folder of RCE named `rce`
2. Open the file `uninstall_service.bat` and set the absolute path of the variable `RCE_ROOT_PATH` to the location of your RCE installation
3. Execute with administrator rights

```
uninstall_service.bat
```

by double-clicking or on the command line

2.1.2. Service Configuration

After installation, the service instance will be started automatically. This will create a default configuration file if it does not exist yet.

To configure the service instance, locate the RCE configuration file in the service user's home directory - by default, it is located at `C:\users\<user id>\.rce\default\configuration.json`. Edit this file and restart the service to apply the changes.

For importing SSH credentials and authorization group keys into a service, please refer to section "Importing authorization data without GUI access" in the User Guide. As of RCE 10, file-based imports are only processed on startup, so a restart is required for this, too.

Note

The need to restart the service is temporary; future versions of RCE will apply configuration changes as soon as configuration files are changed or new import files are placed in the respective folders.

2.2. Setting up Cross-Organization Networks using RCE Uplink

"RCE Uplink" is an experimental feature introduced in RCE 10.x that addresses the growing need for the exchange of computation services between different organizations. Conceptually, this is realized

using RCE's standard approach of providing access to local tools as distributed services, while keeping the tool's files and execution on the local machine.

To allow the efficient and low-overhead exchange of tool computation services between organizations, some sort of network connection must be established between them. For IT security reasons, however, many organizations are understandably reluctant to open ports into their networks. The Uplink approach addresses this by providing a shared coordination and forwarding server called a "relay". This relay server is typically placed outside of any organization's protected network, e.g. on a rented server or in the DMZ of one of the involved organizations.

Due to the exposed nature of this relay server, it is designed to be secure by default. There is only one way of connecting to it, which is the encrypted and authenticated SSH protocol. The protocol transmitted over SSH is designed to be concise and easily audited.

Development is focused on placing as little trust as possible into the relay server. Technical steps are being taken to limit what data can be monitored at the relay server. Some of these features, however, are *not* implemented in the experimental Uplink feature in RCE 10 yet. In all RCE 10.x versions, data transmitted to and from tools is safely encrypted against unauthorized access from *outside* users, through the standard security features provided by the SSH protocol. However, all data could theoretically still be observed by administrators of the relay server. *If this is unacceptable in your setup, please wait for RCE 11 (or later) releases, in which the Uplink feature is planned for non-experimental release. Please note that the feature scope of each release depends on the prioritization of Uplink in relation to project and user needs.*

A typical Uplink setup between two or more organizations involves an Uplink relay server (a specially configured RCE instance) in a location that is accessible from all organization's networks.

This relay server opens an Uplink/SSH port, with one or more sets of credentials for each organization. The recommended approach is to issue one account per person, and potentially additional accounts for technical systems (i.e., servers). This allows tracing activities within the network to individual users or servers. *(Please note that tracing capabilities are rudimentary in the current experimental implementation.)*

Another possible approach is to issue accounts to so-called "gateway" nodes. These are specially configured RCE nodes that make this account usable to other users within the local network without sharing the account's login data itself. End users can then use their individual RCE instances to connect to the gateway node using RCE's local network features. This way, the connection to the relay server can be centrally administered at the gateway while keeping the user's machines simpler.

Please note that in setups based on gateway nodes, both the relay server and other organizations can not easily distinguish nodes behind the gateway, and can therefore not easily associate actions with individuals or servers. This may either be an advantage or a disadvantage, depending on your organization's and your partners' IT security policies. Please make sure that the chosen setup is in accordance with the respective IT departments.

In both approaches, any RCE node that connects directly or indirectly (via gateway) to the relay server can use the tools published by the other organizations as compute services, or publish tools themselves to the other organizations. Future versions of the Uplink feature may provide additional features to centrally restrict this ability. If this is a project need for you, please contact us via <rce@dlr.de>.

2.2.1. Security considerations of external tool publishing

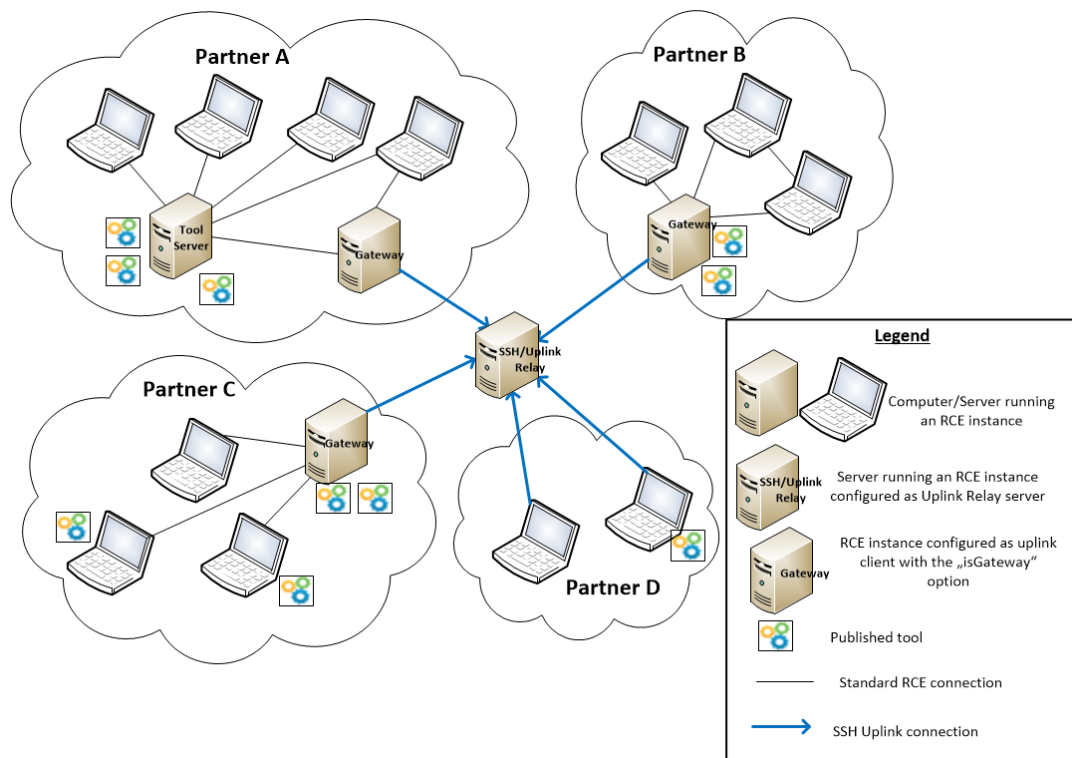
As usual in RCE's distribution approach, the binary or script code of "published" tools never leaves the node it is running on. Instead, "publishing" a tool means offering it as a standardized compute service that can be invoked with external input data. The security of tools with regards to potentially unknown input data lies with the tool developer and/or its publisher.

Therefore, it is recommended to avoid publishing tools to external organizations directly from user's machines. Instead, the recommended approach is to only *develop* them on user's machines, and use RCE's *local* publishing options for initial testing with colleagues. Once the tool is sufficiently stabilized, it should then be installed on dedicated server machines, and published to external partners (via Uplink) from there. This allows central administration and security monitoring of these servers.

2.2.2. Example of a Cross-Organization Network

The following figure gives an example of how such a cross-organization network could be structured:

Figure 2.1. Example RCE network



Note

Please note that this diagram makes heavy use of "gateway" nodes, which are not recommended for typical setups at this time. A future version of this guide will contain an updated diagram.

The four project partners in the example all have an internal network of RCE instances which are connected by standard RCE connections. Uplink connections to a relay server are used to connect between the different partners. The relay server is located outside of the organizations networks, and only the relay server has to be reachable via SSH over the internet. Within each organization, users can either connect directly to the relay server (as in the diagram's "Partner D" network, which is typically the preferred approach), or they can use a so-called "gateway" node. Such a gateway node provides a shared SSH/Uplink connection for multiple users. When such a gateway is used, RCE instances in the institution's internal network can be connected to it by standard (local) RCE connections and still publish tools to the other partners and access tools published by other partners.

Each institution in the example has a different internal setup, all of which are possible:

- Partner A has a dedicated RCE server where the published tools are located, which is connected to the SSH gateway by an RCE connection. All other RCE users in the internal network are connected to this server

- Partner B has put all the tools directly on the SSH gateway instance.
- In Partner C's network, some tools are located on the SSH gateway, but some tools are also published by users directly on their own machines. As long as they are connected to the SSH gateway also those tools can be published to the other partners.
- Partner D has no tool server, instead the users' computers connect directly to the relay server.

2.3. Notes and Recommendations: RCE's Default Network ("LocalNet") Connections

For default connections, an arbitrary number of incoming network ports can be configured.

Note

TODO This section will be expanded in a future version of this guide; please refer to the User Guide for additional information.

2.4. Notes and Recommendations: SSH/Uplink Account management

It is **strongly** recommended to use the RCE console's `keytool uplink-pw` command to generate secure passwords for Uplink accounts. This command creates a random password with approximately 80 bits of entropy, which is considered secure for accounts based on remote login attempts. Alternatively, you can also use SSH key files -- please refer to the RCE User Guide for this.

In both cases, the login credentials (the password or the SSH key pair) should be generated on the client side, ideally by individual users themselves to minimize the transfer of credential data. The relay server's administrator should only receive either the password's bcrypt hash, or the public part of the SSH key pair.

(Deprecated approach:) When using the built-in administration text mode UI to create SSH accounts, there is an issue when entering passwords including the "@" character. This does not weaken security in any way, but can be confusing for end users when their correctly entered password does not work. It may be advisable to inform users about this.

Hashing SSH passwords with external BCrypt tools has been successfully tested and may be documented in a future version of this guide. Please note, however, that this is only ever useful in automated testing or deployment approaches. For normal user operation, the `keytool uplink-pw` console command mentioned above is strongly preferred.

Note

This section is planned to be expanded once the Uplink feature leaves the experimental stage; for example, how to dynamically add SSH/Uplink accounts without a server restart, setting proper Uplink account roles etc.

3. Security Properties of RCE Features

This section provides a concise overview of the security properties of various RCE features, especially those related to network activity, security, and information transmission. It is intended to support security reviews and decisions before deploying and using RCE in your organization. For a general overview of RCE's features and operation, please refer to the standard RCE User Guide (available at <https://rcenvironment.de/pages/documentation/documentation.html> for the latest 10.x release) and the RCE Website (<https://rcenvironment.de>).

3.1. Security Properties of RCE's Default ("LocalNet") Network Connections

The default or "internal" network connections of RCE (informally called "LocalNet" connections) are designed for close collaboration within a working group, and are only intended to be used within trusted networks. If you require secure connections across the boundaries of trusted networks (especially across the internet), or collaborate with external partners, the encrypted and authenticated SSH Uplink connections should be used instead.

A default RCE installation does *not* open a network port for these connections unless explicitly configured to do so.

For a general overview of RCE's default network approach, please refer to the standard RCE User Guide (available at <https://rcenvironment.de/pages/documentation/documentation.html> for the latest release).

If RCE is configured to accept incoming network connections, the port number(s) to be used can be freely chosen within the range permitted by the operating system. As RCE should never be run with elevated privileges (SYSTEM, root, or equivalent), the effective range of usable ports is 1024 to 65535. Note that port values below 1024 are currently not explicitly refused by RCE, but will typically fail with a permission error. This may be changed to an explicit check in a future update.

Incoming connections can be restricted to certain IPv4 addresses. However, these filters are static, so this feature is only useful for either restricting connections to localhost for local multi-instance setups, or setting up networks between few, static, and long-living nodes. Both setups are fairly untypical, but may still be of use in certain situations.

3.2. Security Properties of RCE's SSH Server Port

RCE offers a built-in SSH server port, which is disabled by default: An RCE installation does not open a port for accepting SSH connections unless explicitly configured to do so. This port is provided using the Java library Apache SSHD (<https://mina.apache.org/sshd-project/>). We regularly review this and other related libraries for security updates, and issue new RCE releases when necessary.

If RCE's SSH server port is enabled, the port number(s) to be used can be freely chosen within the range permitted by the operating system. As RCE should never be run with elevated privileges (SYSTEM, root, or equivalent), the effective range of usable ports is 1024 to 65535. Note that port values below

1024 are currently not explicitly refused by RCE, but will typically fail with a permission error. This may be changed to an explicit check in a future update.

The accounts used to log into this SSH port are completely independent of system accounts; RCE provides its own account management.

Account passwords are never saved in plaintext. For login verification, only salted BCrypt hashes are stored. SSH key files are supported.

For each SSH account, a single authorization role is selected, which defines which actions are permitted for this account (e.g. workflow monitoring).

These SSH accounts, each with its assigned role and its password hash or SSH public key string, are stored in a JSON file within the instance's "profile" directory. The location of this profile directory can be customized.

Accounts can be added or removed by using a provided text mode UI, or by manually inserting or deleting entries in the JSON file.

Connecting to RCE's SSH port does not create or allow any TCP port forwardings; this feature of standard SSH is disabled.

Each RCE instance automatically creates its own SSH server key pair once the SSH port is enabled. The key data is stored in the RCE instance's profile directory.

Client-side strict host key checking is disabled, and a warning is logged when the server-side key has changed. As the SSH login only provides a first line of security, with the actual service security provided by the RCE authorization system, even a successful MITM attack would not have a significant impact. Additionally, without access to the real login credentials, an attacker would have to perform successful MITM attacks on all incoming connections to the relay server, effectively replacing it completely. Such a scenario is highly unlikely, especially because even on success, such an attack would not impact the security of the service authorization system itself (as noted above).

RCE's SSH port supports three modes of operation:

- a custom command shell for RCE administration commands; Unlike standard SSH, this feature *never* provides a direct system shell.
- the deprecated "SSH Remote Access" feature (to be replaced in RCE 11.0);
- the new "SSH Uplink" feature (released as experimental feature in RCE 10.0)

The latter SSH Uplink feature is the recommended mode for offering tools as services to users outside of your organization. Unlike "SSH Remote Access", this mode was specifically designed for this purpose. Further, a special SSH authorization role is provided to restrict SSH accounts to using this mode exclusively. Notably, this also completely disables access to the interactive RCE command shell.

3.3. Security Properties of RCE's Uplink Feature

This protocol was specifically designed to allow different organizations to provide tool execution services to each other. As this naturally involves creating network connections over the boundaries of organization's networks, security is the top priority of its design and implementation. For a general overview of its network approach, please see the "administration" section below.

From an administrator's point of view, the main novelty compared to the older "SSH Remote Access" feature is that it is designed to connect different organizations over a shared "relay" server that can be placed outside the organization's internal network. This eliminates the need to open any incoming

network ports in the organization's firewalls. Connections are only established from the internal network to the outside (e.g. the internet), but are never required in the opposite direction.

It is of course also possible to use this feature completely inside the organization's network, for example for securely providing tool execution services between different departments.

Although the current implementation is built on top of the SSH protocol, the actual Uplink protocol is not tied to it. SSH is used as the default transport mechanism as it provides well-tested encryption and login authorization. Technically, this mechanism could be replaced by any other that provides similar features. For example, the Uplink protocol could be expanded/adapted to support TLS connections, which would provide support for CA-based server certificates. At this time, however, there are no specific plans to implement this. Please contact us at <rce@dlr.de> if this feature would be relevant for you.

3.4. Security Properties of RCE's Tool Integration

For general information about RCE's Tool Integration concepts and configuration, please refer to the RCE User Guide (available [here](#) for the latest 10.x release).

From a security perspective, the service-providing side of Tool Integration consists of a dedicated user (typically an administrator or engineer familiar with the tool) defining a static script that controls the tool's invocation. Typical tasks in this script are custom input pre-processing or conversion, invoking one or more command-line tools, and assembling the final (external) data output.

All inputs and outputs of the service representing the tool is explicitly defined as part of the Tool Integration setup. Inputs and outputs are standardized to data types like Integer, Float, String, File, Directory, Vector, Matrix, or Table.

Beyond input data and (optionally) tool properties, the caller of the tool has no means of influencing the tool's execution.

The tool script is executed by passing it to `bash` on Linux or `cmd` on Windows. (To reiterate: This script is *static*, and always defined by a dedicated user on the *providing* side, *never* by the caller.) However, RCE has no general control over the operations that the administrator/tool integrator performs within that script. Safely handling the data that is received via configured properties or the tool's input data channels lies in the responsibility of the script author.

As part of the tool script editor, RCE offers some support for preventing typical pitfalls in this area. For example, property strings are automatically double-quoted when they are inserted into the editor. Also, certain known-unsafe string contents are disallowed to be inserted into script code; when these are received by the tool, the tool execution is aborted with an error message.

The only data that is implicitly published from a tool's execution is the standard and error output of the executing tools, as well as execution time data. If this is undesired, standard shell/batch features can typically be used to suppress this output.

3.5. Security Properties of RCE's Tool Authorization System

Tools can be assigned to any set of authorization groups, which makes them accessible to any user that is a member of that group.

This assignment is defined on the machine where this tool is "integrated" (ie, where it is defined to be actually run; see the "Tool Integration" section in the RCE User Guide for details).

There is no central authority for group membership. This is an intentional design decision to keep the authorization system flexible and lightweight.

This decentralized approach has, among other things, the benefit of removing administrative overhead when setting up groups between different organizations, for example in the typical use case of a research project with partners from different organizations.

Each group membership is defined by access to a secret 256 bit key. From a user's perspective, this key works like a password required to access a specific group. These group keys are imported into RCE instances as text strings, after which they are available on this instance until they are removed.

The text snippets used to give users access to a certain group should be transported in a secure way, for example via an intranet page with access control.

Users can create any number of authorization groups using their RCE clients.

Due to the decentralized nature of the authorization groups, there is no global password change mechanism, or a central way of revoking group memberships. If this is a concern, periodic group rotation should be used. This can be realized, for example, by using an intranet page with organization-specific access control where the current group access codes are posted.

The group keys that were created or imported into an RCE instance are stored in an encrypted form using the Secure Storage implementation of the Eclipse platform (<https://www.eclipse.org/>). Each user's secure RCE data is encrypted with a random 256 bit master key that is stored in the user's home directory. This way, even if a user accidentally shares his/her whole RCE profile directory to a public location, nobody else can gain access to the stored group keys.

RCE provides console commands for listing all active authorization groups and their assignments, which can be used for automated auditing.